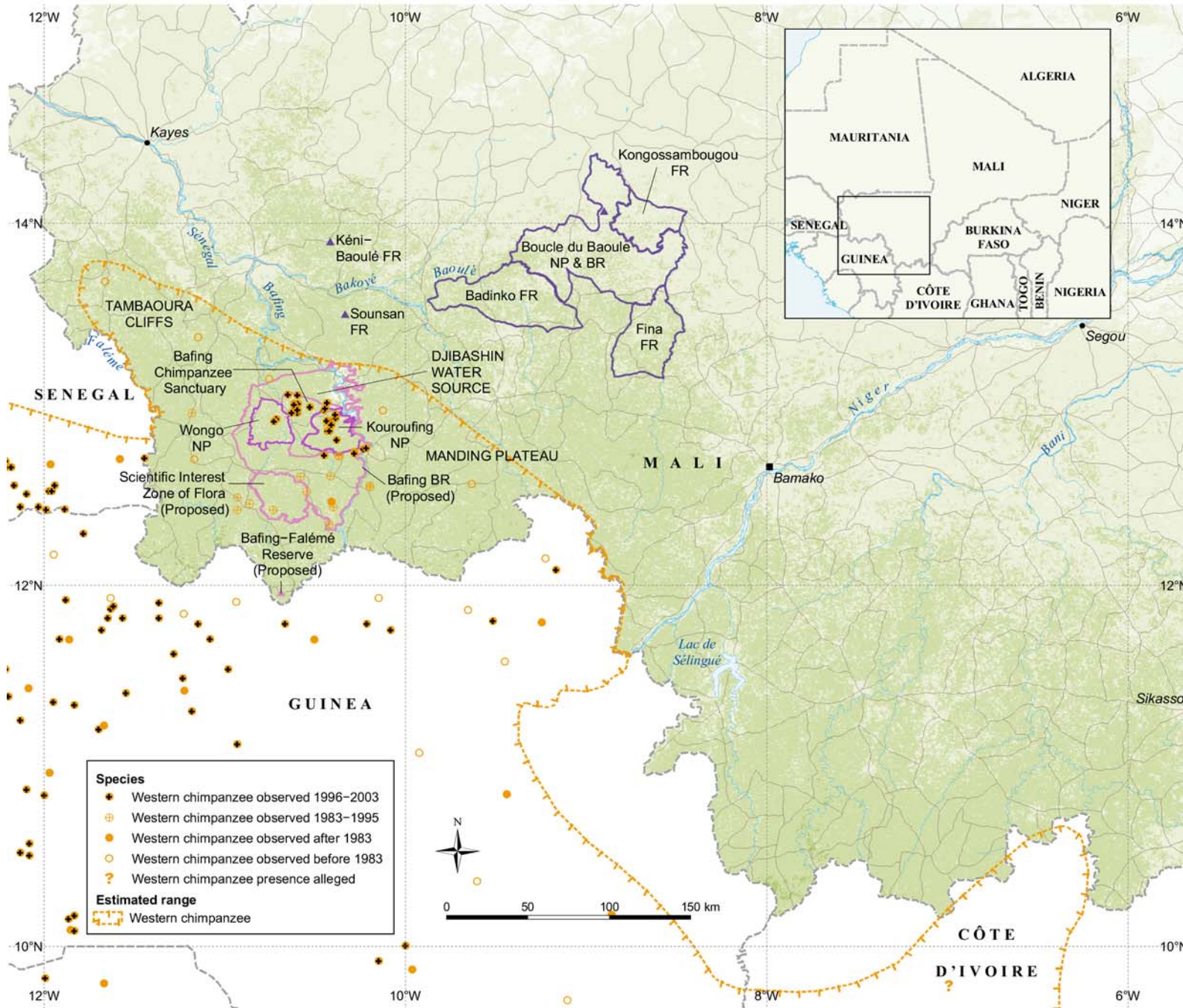


Chimpanzee Distribution in Mali



Compiled by M. Doughty, July 2004.
 Source: ESRI Data & Maps CD, UNEP-WCMC Databases, Percent tree cover - University of Maryland (<http://ocds.umd.edu/ndvi/distribution.htm>), Duvallet et al. (2003), Buisson (2001), Komos et al. (2003), Carter et al. (2003).
 The contents of this map do not necessarily reflect the views or policies of UNEP-WCMC or contributory organizations. The designations employed and the presentations do not imply the expressions of any opinion whatsoever on the part of UNEP-WCMC or contributory organizations concerning the legal status of any country, territory, city or area or its authority or concerning the delimitation of its frontiers or boundaries.