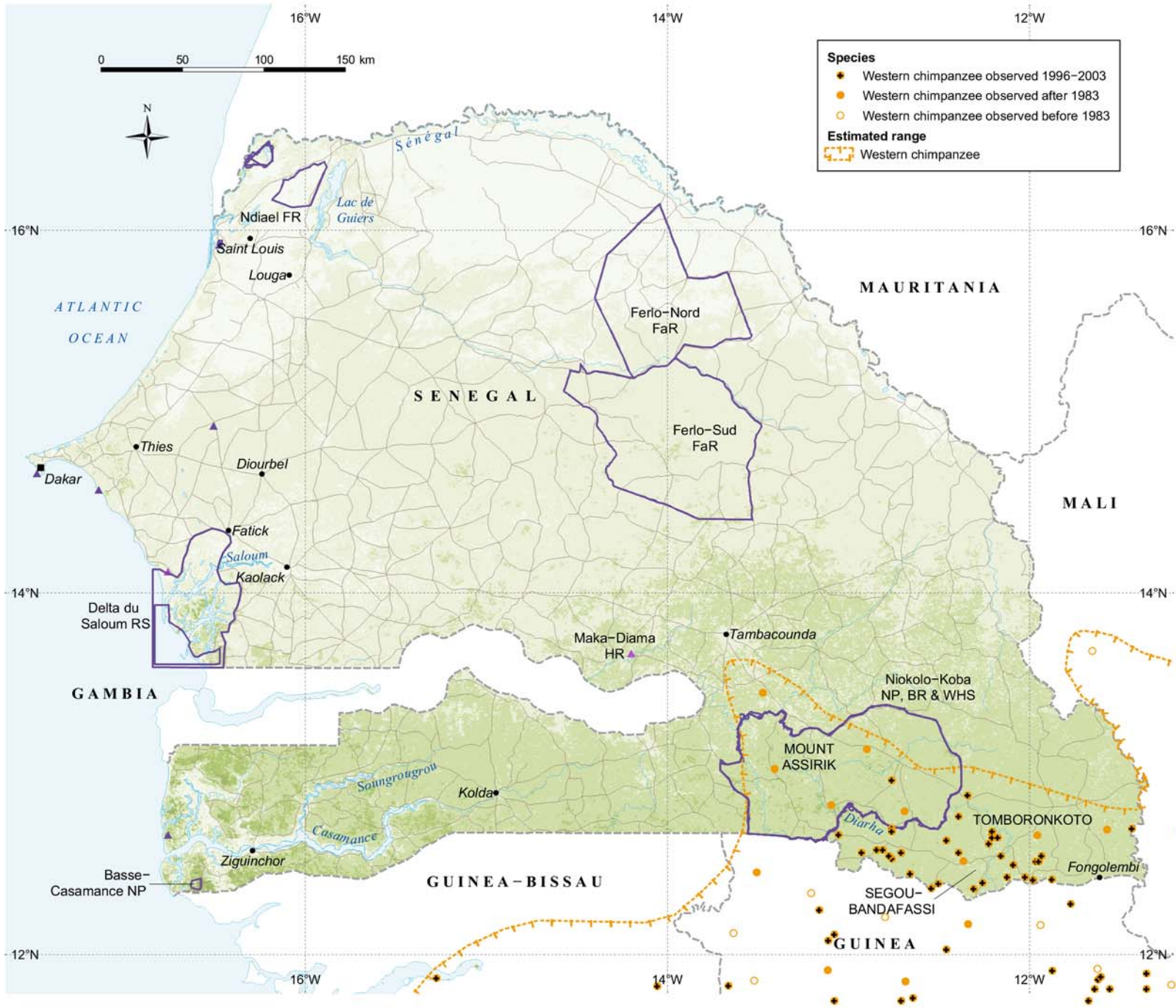


# Chimpanzee Distribution in Senegal



Compiled by M. Doughty, March 2004.  
 Source: ESR Data & Maps CD, UNEP-WCMC Databases.  
 Report from cover: University of Maryland  
 (<http://roads.umacs.umd.edu/cv558/boukon.htm>), Carter  
 et al (2003), Buysine (2001).  
 The contents of this map do not necessarily reflect the views  
 or policies of UNEP-WCMC or contributory organizations. The  
 designations employed and the presentations do not imply the  
 expressions of any opinion whatsoever on the part of UNEP-WCMC  
 or contributory organizations concerning the legal status of any  
 country, territory, city or area or its authority, or concerning the  
 delimitation of its frontiers or boundaries.